



<http://www.kato-works.co.jp>

- Before you use the crane, study the instruction manual thoroughly and follow the instructions it contains.
- Some differences may arise between the machine delivered and the photographs in the catalog due to the country the crane will be used in or any added improvements.  
Note : The specification may be changed without notice.
- The actual colors of the body and interior may appear slightly different from those shown in this catalogue due to the limitations of photography and printing.

● Contact for enquiry:

**KATO WORKS CO.,LTD.**

9-37, Higashi-ohi 1-chome, Shinagawa-ku, Tokyo 140-0011, Japan.  
Tel. : Head Office Tokyo(03)3458-1111  
Overseas Marketing Department Tokyo(03)3458-1115  
Fax. : Tokyo(03)3458-1163



Obtained authentication of International Specification ISO9001 for quality assurance.

**KATO WORKS (THAILAND) CO.,LTD.**

7/488 Moo 6, Tambol Mabyangporn, Amphur Pluakdaeng,  
Rayong Province 21140, Thailand  
Tel. : 038-020-145  
Fax. : 038-020-148

**NK-600RX**  
KATO WORKS

**FULLY HYDRAULIC TRUCK CRANE**

Maximum lifting capacity: 60t×2.7m  
Maximum boom length: 43.0m  
Engine output: 302kW / 1,800min<sup>-1</sup> (ISO Net)



# Fine traveling, excellent lifting, tough structure KATO New generation Truck Crane

## Designed by KATO & Made by KATO

KT4060 crane carrier is specially designed for truck crane. High-tensile steel is used for frame to enhance durability.

## High reliable transmission

Easy to operate and stable speed change.  
Model: HINO HX06  
Number of speed .....6 forward & 1 reverse

## High performance engine

Powerful driving force for comfortable traveling. Strong torque generated from low engine speed.  
Model : HINO E13C-YY(Equivalent to Euro 3)

Piston displacement ..... 12.913L  
Max. Power ..... 302kW / 1,800min<sup>-1</sup>  
Max. Torque ..... 1,863N·m / 1,100min<sup>-1</sup>



# NK-600RX

KATO WORKS

# Strong and smooth lifting

## 4-section round-shaped SUPERBOOM

Simultaneous extension / retraction for various work.

### ● Boom lifting capacity **SUPERBOOM**

- Max. lifting capacity..... 60t×2.7m
- Boom length..... 11.0m~43.0m
- Boom derricking angle..... -2.5°~81°

## 2-section manual jib

Boom side stow type. Easy to attach.

### ● Manual jib lifting capacity

- Max. lifting capacity..... 3.5t×78°
- Jib length..... 9.2m, 15.0m
- Jib offset angle..... 5°, 25°, 45°
- Max. lifting height (Boom+Jib)..... 58.0m



# Wide view carrier cabin

Roomy and comfortable space. Wide view cabin enhances safer driving. Seat suspensions reduce driver's fatigue and keep suit driving position. Both left-hand and right-hand steering are available.



## 3-position outriggers

Ensure safe and stable operation by 3-position outriggers.



# Comfortable operator's cabin



● ACS display ● Camera monitor (option) ● Joystick control lever

# Various safety functions for crane operation

## K-COR (KATO Crane Operation Recorder) (option)

Records working status of crane. Recorded data can retrieve by the SD memory card.



▲ K-COR (option)

## ACS (Automatic Crane System)

MS-200 moment limiter is installed. Touch panel type color display enhances operability and visibility.

### ● Load factor limiting function

Available to control load factor between 80% to 100% of rated-lifting-capacity to keep a bigger safety margin.



# Various devices and equipments

Great access by steady steps. Safety buzzer, lamp and light support safe operation.



▲ Yellow rev. light (option) ▲ Auxiliary hook stowage ▲ Boarding step (Left)

▲ Side step (Left-center)

▲ Side step (Left-rear)



▲ Projector-type headlamps ▲ Slewing warning buzzer ▲ Fall prevention handle (at maintenance) ▲ Step lamp

▲ Winch view camera (option)



▲ LED type ACS outside indicator



▲ Side step (Right-rear) ▲ Side marker lamp ▲ Side step (Right-center) ▲ Tool Box ▲ Boarding step (Right)

# NK-600RX

## FULLY HYDRAULIC TRUCK CRANE

### 【SPECIFICATION】

#### ■ CRANE

Description	Truck crane with maximum lifting capacity 60 ton
Model	NK-600RX

##### ● Specification

Maximum rated lifting capacity	11.0 m Boom	60,000kg × 2.7 m (Parts of line : 14)
	11.0 m Boom	40,000kg × 4.0 m (Parts of line : 10)
	15.0 m Boom	28,000kg × 5.0 m (Parts of line : 8)
	19.0 m Boom	28,000kg × 5.0 m (Parts of line : 8)
	23.0 m Boom	24,000kg × 6.0 m (Parts of line : 6)
	27.0 m Boom	20,000kg × 7.0 m (Parts of line : 5)
	35.0 m Boom	14,000kg × 8.5 m (Parts of line : 4)
	43.0 m Boom	8,000kg × 11.0 m (Parts of line : 4)
	9.2 m Jib	3,500kg × 78° (Parts of line : 1)
	15.0 m Jib	2,500kg × 80° (Parts of line : 1)
	Rooster	4,500kg (Parts of line : 1)
Boom length	11.0m — 43.0m (5-section)	
Fly jib length	9.2m, 15.0m (2-section)	
Maximum lifting height	43.0m (Boom) 58.0m (Jib)	
Hoisting line speed	Main winch	114 m/min. (at 3rd layer)
	Auxiliary winch	105 m/min. (at 2nd layer)
Hoisting hook speed	Main winch	(Parts of line; 14) : 8.1 m/min. (at 3rd layer)
	Auxiliary winch	(Parts of line; 1) : 105 m/min. (at 2nd layer)
Boom derricking angle	-2.5° — 81°	
Boom derricking time	70s (-2.5° — 81°)	
Boom extending time	170s (11.0m — 43.0m)	
Slewing speed	2.1min <sup>-1</sup>	
Tail slewing radius	3,480mm	

##### ● Equipment and structure

Boom type	Round-shaped, 5-section hydraulic telescopic type (the 2nd and 3rd, 4th and 5th boom sections simultaneously operated)	
Jib type	2 sections (2nd section of draw-out type) (offset angles 5°, 25° and 45°)	
Boom extension/retraction equipment	Three hydraulic cylinders and wire ropes used together	
Boom derricking/lowering equipment	One hydraulic cylinder of direct acting type with pressure-compensated flow control valve	
Winch system Main & Auxiliary winches	Driven by axial plunger type hoisting motor through planetary gear reduction. Controlled independently by operating lever. equipped with automatic brake.	
Slewing equipment	Ball bearing type	
Wire rope for hoisting	Main winch	Diameter: 18mm × Length: 235m
	Auxiliary winch	Diameter: 18mm × Length: 125m

##### ● Hydraulic equipment

Oil pump	4 section gear type	
Hydraulic motor	Hoisting motor	Axial plunger type
	Slewing motor	Axial plunger type
Control valve	3 position 4 way double acting with integral check and relief valves	
Cylinder	Double acting type	
Oil reservoir capacity	695L	

##### ● Safety devices

	ACS (Automatic Crane System with voice alarm), Boom derricking / telescoping holding valve, Overhoist prevention device, Drum lock device, Winch drum turning indicator device, Automatic winch brake, Winch holding valve, Winch drum roller, Hydraulic safety valves, Outrigger lock pins, Joystick control safety stop system, Slewing lock	
--	--	--

##### ● Standard equipment

	Front jack, Fly jib, Rooster sheave, Independent two winches control system, Irregular winding prevention device, Winch automatic brake, Hooks (40 ton, 20 ton, 4.5 ton), Hydraulic oil cooler, Full size fender, Large size steps, 3 working lights, Moment limiter with voice alarm, Winch drum turning indicator, Sun visor, Cigar lighter, Ashtray, Cab floor mat, Tool kit, Winch over-unwinding device, AM/FM Radio, Fire extinguisher, Cab level gauge	
--	---	--

##### ● Optional equipment

	Winch drum mirror (hoist mirror), Yellow rev. light, Cab heater, Cab cooler, Fan, Roof visor, Sub hook sheave for 60t, Outrigger sheet, K-COR (Kato Crane Operation Recorder)	
--	---	--

#### ■ CARRIER

Maker	KATO
Model	KT4060L, KT4060R

##### ● Specification

Maximum traveling speed	75km/h
Grade ability (tan θ)	35% (computed at G.V.W.= 41,200kg)
Minimum turning radius	11.7m

##### ● General dimensions & G.V.W.

Overall length	approx. 13,370mm	
Overall width	approx. 2,800mm	
Overall height	approx. 3,750mm	
Wheel base	1,450mm + 3,900mm + 1,350mm = 6,700mm	
Treads	Front	2,300mm
	Rear	2,080mm
Outriggers	Type	Hydraulic H-beam type (with float and vertical cylinder in single unit)
	Extension width	7,000mm (Fully extended)
		4,800mm (Intermediately extended) 2,500mm (Completely retracted ※blocked on vertical cyls.)
Gross machine weight	Gross weight	approx. 41,200kg
	Front weight	approx. 15,500kg
	Rear weight	approx. 25,700kg

##### ● Engine

Maker	HINO
Model	E13C-YY (Equivalent to EURO III)
Type	4 cycle, 6 cylinders, water cooled, direct injection turbo-charged diesel engine with intercooling
Piston displacement	12.913L
Max. power	302kW / 1,800min <sup>-1</sup>
Max. torque	1863N · m / 1,100min <sup>-1</sup>

\* NOTE : Diesel Fuel recommended by KATO must be used

##### ● Equipment and structure

Drive system	8 × 4	
Clutch	Single dry plate, hydraulic control with air booster	
Transmission	Manual transmission type	
Number of speeds	6 forward & 1 reverse speed	
Axles	Front	Reverse "ELLIOT" type
	Rear	Full floating type
Suspension	Front	Leaf springs with shock absorber
	Rear	Equalizer beams & torque rods
Brake	Service	2 circuit air brake
	Front axles	Disk brake
	Rear axles	Drum brake
	Parking	Spring loaded brake
	Auxiliary	Engine retarder brake
Steering	Type	Ball nut type with power booster
Tire size	Front	315 / 80R22.5 156 / 150K
	Rear (dual tire)	315 / 80R22.5 156 / 150K
	Front	315 / 80R22.5 156 / 153J
	Rear (dual tire)	315 / 80R22.5 156 / 153J
Fuel tank capacity	370 L	
Seating capacity	2 persons	
Battery	12V — 145G51 × 2	

##### ● Standard equipment

	Towing hook (front and rear, eye type), Spare tire & wheel, Air dryer, AM/FM Radio, Cigar lighter, Ashtray, Air conditioner	
--	---	--

- Stow the hooks in place before traveling.
- Before you use this machine, read the precautions in the instruction manual thoroughly to operate it correctly.
- KATO products and specifications are subject to improvements and changes without notice.

771001000 (Left-hand drive)  
771001010 (Right-hand drive)

**11.0m — 43.0m Boom**

(Unit: Metric ton)

Outriggers fully extended with front jack - 360° full range								
Outriggers fully extended without front jack - over side and over rear								
Working radius (m)	11.0m Boom	11.0m Boom	15.0m Boom	19.0m Boom	23.0m Boom	27.0m Boom	35.0m Boom	43.0m Boom
2.7	60.00							
3.0	55.20	40.00	28.00	28.00	24.00			
3.5	46.70	40.00	28.00	28.00	24.00			
4.0	40.50	40.00	28.00	28.00	24.00	20.00		
4.5	35.50	35.50	28.00	28.00	24.00	20.00		
5.0	31.50	31.50	28.00	28.00	24.00	20.00	14.00	
5.5	28.30	28.30	27.60	27.50	24.00	20.00	14.00	
6.0	25.60	25.60	25.30	25.00	24.00	20.00	14.00	
6.5	23.30	23.30	23.00	22.90	22.50	20.00	14.00	8.00
7.0	21.40	21.40	21.00	20.80	20.60	20.00	14.00	8.00
7.5	19.70	19.70	19.30	19.30	19.00	18.60	14.00	8.00
8.0	17.90	17.90	17.75	17.60	17.50	17.50	14.00	8.00
8.5	16.50	16.50	16.40	16.30	16.20	16.20	14.00	8.00
9.0	15.10	15.10	15.10	14.90	14.80	14.70	13.90	8.00
10.0			12.40	12.30	12.20	12.05	12.90	8.00
11.0			10.35	10.15	10.05	9.90	10.85	8.00
12.0			8.70	8.50	8.40	8.30	9.15	7.85
13.0			7.40	7.20	7.10	7.00	7.85	7.40
14.0				6.15	6.05	5.95	6.75	6.85
16.0				4.50	4.40	4.25	5.15	5.55
18.0					3.15	3.05	3.90	4.35
20.0					2.25	2.15	2.95	3.35
22.0						1.40	2.20	2.65
24.0						0.85	1.60	2.05
26.0							1.10	1.55
28.0							0.70	1.10
30.0								0.80
31.0								0.60
Critical boom angle	—						33°	40°
Standard hook	For 60ton	For 40ton				For 20ton		
Hook mass	615kg	475kg				320kg		
Parts of line	14	10	8	8	6	5	4	4

771-75103000

(Unit: Metric ton)

Outriggers intermediately extended without front jack - 360° full range							
Outriggers fully extended without front jack - over front							
Working radius (m)	11.0m Boom	15.0m Boom	19.0m Boom	23.0m Boom	27.0m Boom	35.0m Boom	43.0m Boom
3.0	32.00	28.00	28.00	24.00			
3.5	32.00	28.00	28.00	24.00			
4.0	32.00	28.00	28.00	24.00	20.00		
4.5	30.70	28.00	28.00	24.00	20.00		
5.0	23.10	22.75	21.50	21.40	20.00	14.00	
5.5	18.25	17.95	17.45	16.80	16.70	14.00	
6.0	14.90	14.65	14.50	13.60	13.50	14.00	
6.5	12.45	12.20	12.00	11.50	11.20	12.30	8.00
7.0	10.50	10.35	10.20	9.95	9.45	10.45	8.00
7.5	9.10	8.90	8.75	8.50	8.20	9.00	8.00
8.0	7.90	7.70	7.55	7.35	7.20	7.85	8.00
9.0	6.05	5.90	5.75	5.55	5.55	6.05	6.50
10.0		4.55	4.45	4.20	4.20	4.80	5.20
11.0		3.50	3.35	3.15	3.15	3.90	4.20
12.0		2.65	2.55	2.35	2.35	3.10	3.45
13.0		2.00	1.85	1.65	1.65	2.45	2.85
14.0						1.90	2.30
15.0							1.85
Critical boom angle	—	—	35°	48°	58°	64°	68°
Standard hook	For 40ton				For 20ton		
Hook mass	475kg				320kg		
Parts of line	8	8	8	6	5	4	4

771-75103000

## 43m Boom + 9.2m Jib

## 43m Boom + 15m Jib

(Unit: Metric ton)

Outriggers fully extended with front jack - 360° full range Outriggers fully extended without front jack - over side and over rear													
43m Boom + 9.2m Jib							43m Boom + 15m Jib						
Boom angle (°)	Offset 5°		Offset 25°		Offset 45°		Boom angle (°)	Offset 5°		Offset 25°		Offset 45°	
	Working radius (m)	Load (ton)	Working radius (m)	Load (ton)	Working radius (m)	Load (ton)		Working radius (m)	Load (ton)	Working radius (m)	Load (ton)	Working radius (m)	Load (ton)
81	10.3	3.50	13.3	2.50	15.0	1.35	81	12.0	2.50	16.5	1.30	19.8	0.75
80	11.3	3.50	14.2	2.50	15.8	1.35	80	13.1	2.50	17.5	1.30	20.6	0.75
79	12.3	3.50	15.1	2.45	16.7	1.35	79	14.3	2.45	18.5	1.25	21.4	0.70
78	13.3	3.50	16.0	2.40	17.6	1.30	78	15.3	2.40	19.5	1.25	22.3	0.70
77	14.3	3.40	16.9	2.30	18.4	1.30	77	16.4	2.30	20.4	1.20	23.3	0.70
75	16.1	3.10	18.7	2.20	20.1	1.25	75	18.5	2.15	22.4	1.15	25.1	0.65
72	18.8	2.65	21.2	2.00	22.6	1.20	74	19.5	2.10	23.3	1.15	26.0	0.65
70	20.5	2.45	22.9	1.85	24.1	1.15	72	21.5	1.90	25.2	1.10	27.7	0.65
68	22.3	2.25	24.5	1.75	25.7	1.15	70	23.4	1.70	27.0	1.05	29.4	0.65
66	24.0	2.05	26.1	1.65	27.2	1.10	68	25.3	1.55	28.8	1.00	31.0	0.60
64	25.4	1.70	27.7	1.45	28.7	1.10	66	27.1	1.45	30.6	0.95	32.6	0.60
62	26.8	1.40	29.1	1.20	30.2	1.05	64	28.9	1.30	32.3	0.90	34.1	0.60
60	28.3	1.10	30.4	1.00	31.4	0.90	62	30.5	1.10	34.0	0.90	35.5	0.60
58	29.7	0.85	31.7	0.75	32.6	0.75	60	32.1	0.85	35.4	0.75	37.0	0.55
56	31.1	0.75	33.0	0.55	33.8	0.55	58	33.6	0.65	36.9	0.55	38.4	0.55
Critical boom angle	55°						Critical boom angle	57°					
Standard hook	For 4.5 ton						Standard hook	For 4.5 ton					
Hook mass	120kg						Hook mass	120kg					
Parts of line	1						Parts of line	1					

771-75104000

## 43m Boom + 9.2m Jib

## 43m Boom + 15m Jib

(Unit: Metric ton)

Outriggers intermediately extended without front jack - 360° full range Outriggers fully extended without front jack - over front													
43m Boom + 9.2m Jib							43m Boom + 15m Jib						
Boom angle (°)	Offset 5°		Offset 25°		Offset 45°		Boom angle (°)	Offset 5°		Offset 25°		Offset 45°	
	Working radius (m)	Load (ton)	Working radius (m)	Load (ton)	Working radius (m)	Load (ton)		Working radius (m)	Load (ton)	Working radius (m)	Load (ton)	Working radius (m)	Load (ton)
81	10.3	3.50	13.3	2.50	15.0	1.35	81	12.0	2.50	16.5	1.30	19.8	0.75
80	11.3	3.50	14.2	2.50	15.8	1.35	80	13.1	2.50	17.5	1.30	20.6	0.75
79	12.3	3.50	15.1	2.40	16.7	1.35	79	14.3	2.40	18.5	1.25	21.4	0.70
78	13.0	2.75	15.9	2.15	17.6	1.30	78	15.2	2.20	19.5	1.25	22.2	0.70
77	13.9	2.40	16.7	1.90	18.4	1.30	77	16.1	1.90	20.4	1.20	22.3	0.70
76	14.7	2.00	17.4	1.60	19.3	1.25							
Critical boom angle	75°						Critical boom angle	76°					
Standard hook	For 4.5 ton						Standard hook	For 4.5 ton					
Hook mass	120kg						Hook mass	120kg					
Parts of line	1						Parts of line	1					

771-75105000

(Unit: Metric ton)

Outriggers completely retracted (blocked on vertical cylinders) - 360° full range	
Working radius (m)	11.0m Boom
3.0	8.00
3.5	6.40
4.0	5.10
4.5	4.20
5.0	3.40
5.5	2.80
6.0	2.30
6.5	1.90
7.0	1.60
7.5	1.25
8.0	1.00
Standard hook	For 40 ton
Hook mass	475kg
Parts of line	10

771-75105001

4th and 5th boom section telescoping mode (Unit: Metric ton)

Outriggers fully extended with front jack - 360° full range Outriggers fully extended without front jack - over side and over rear		
Working radius (m)	19.0m Boom	27.0m Boom
3.0	14.00	
3.5	14.00	
4.0	14.00	8.00
4.5	14.00	8.00
5.0	14.00	8.00
6.0	13.60	8.00
7.0	12.00	8.00
8.0	10.70	7.30
9.0	9.65	6.50
10.0	8.80	5.85
11.0	8.05	5.30
12.0	7.45	4.85
13.0	6.90	4.45
14.0	6.45	4.10
15.0	6.05	3.80
16.0	5.70	3.50
18.0		3.05
20.0		2.70
22.0		2.40
24.0		2.15
Critical boom angle	—	
Standard hook	For 20ton	
Hook mass	320kg	
Parts of line	4	

4th and 5th boom section telescoping mode (Unit: Metric ton)

Outriggers intermediately extended without front jack - 360° full range Outriggers fully extended without front jack - over front		
Working radius (m)	19.0m Boom	27.0m Boom
3.0	14.00	
3.5	14.00	
4.0	14.00	8.00
4.5	14.00	8.00
5.0	14.00	8.00
6.0	13.60	8.00
7.0	11.20	8.00
8.0	9.05	7.30
9.0	7.45	6.50
10.0	6.20	5.85
11.0	5.20	5.30
12.0	4.35	4.60
13.0	3.70	4.00
14.0	3.10	3.45
15.0	2.60	3.00
16.0	2.20	2.65
18.0		2.00
20.0		1.50
22.0		1.05
24.0		0.75
Critical boom angle	—	
Standard hook	For 20ton	
Hook mass	320kg	
Parts of line	4	

771-75106000

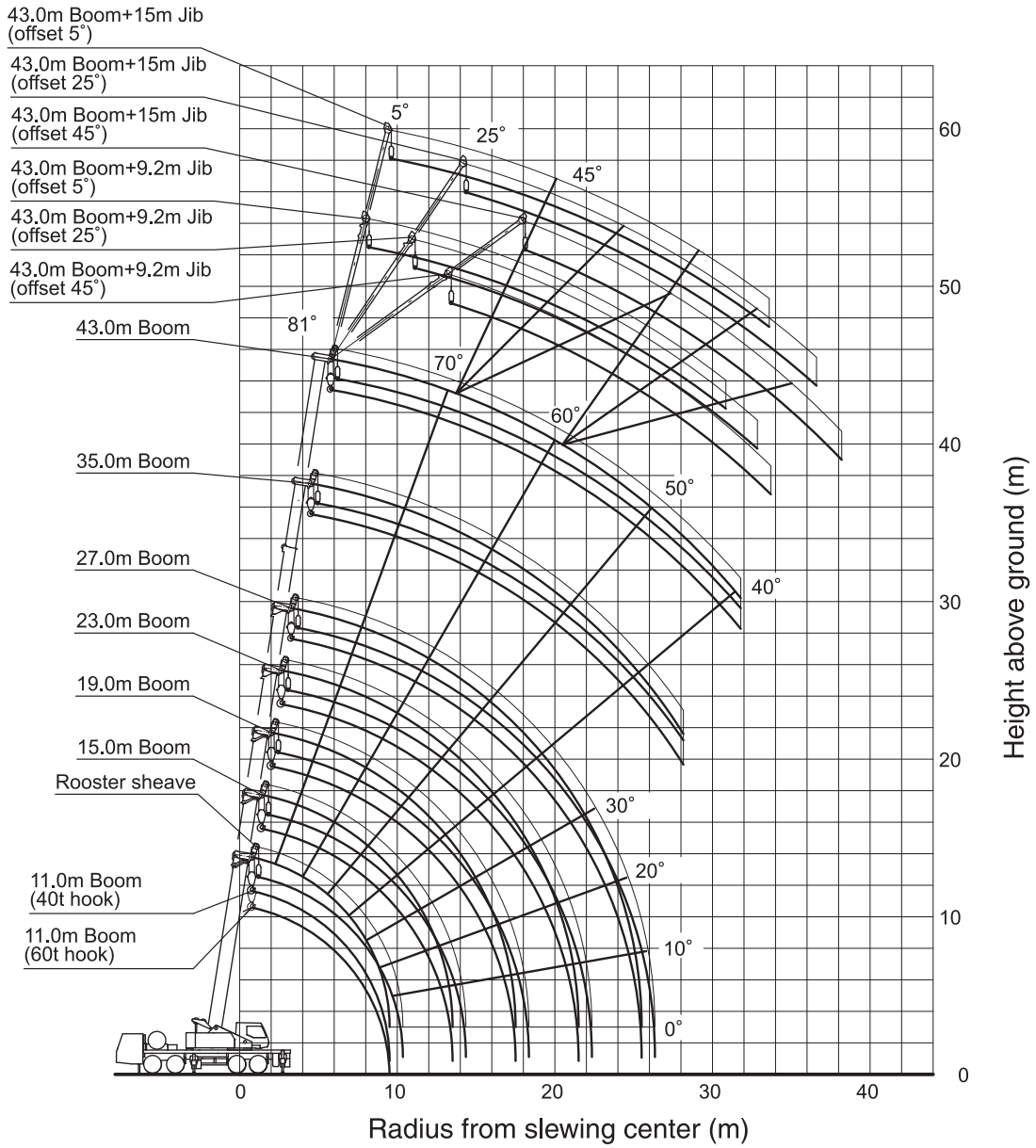


## ■ Notes for the lifting capacity chart

---

1. The rated lifting capacities indicate the maximum load which can be lifted by this crane provided it is standing on firm, level ground. They include the mass of the hook and all other slings etc. The capacities enclosed with bold lines are based on the structural strength of the crane.
2. The working radii as given in the rated lifting capacity chart are the actual values including the deflection of the boom. Therefore, operate the crane based on the working radius. However, the working radii shown for jib operations are based on the values obtained when the boom is fully extended (43m). If the boom is at any other length, jib operations should be performed on the basis of the boom angle only.
3. The rated lifting capacities for the rooster sheave are equivalent to the rated lifting capacities for the boom to a maximum of 4500kg.  
At all times the mass of all slings etc. in use (including the slings etc. attached to the boom) must be subtracted from the rated lifting capacity.
4. If the boom length exceeds the rated value, the rated lifting capacities for the rated boom length or for the one stage longer boom length should be referred to, and the crane should be operated within the smaller lifting capacity.
5. If you are working with the boom while the jib is mounted, 4000kg plus the mass of the slings etc. should be subtracted from the rated lifting capacity. When performing the above operation, do not use the rooster sheave.
6. Critical boom angles for each boom length are shown on bottommost line of the rated lifting capacity chart. If the boom angle is lowered to less than the critical boom angle, the crane will tip over even if unloaded. Therefore, never lower the boom below these angles.
7. The standard number of parts of line for each boom length are indicated in the rated lifting capacity chart. If you work with a non-number of parts of line, take 42.1kN (4.3tf) as the maximum load on any part of the wire rope.
8. Frontward hoisting capacity with the outriggers fully extended is lower than sideward or rearward hoisting capacity. Great care should be taken when transferring from over side to over front since there is a danger of overloading.
9. Crane operation is permissible up to a wind speed of 10m/s.  
Even in relatively light wind conditions, extra care should be taken when handling loads presenting large wind catching areas.
10. If you work with a load in excess of the rated lifting capacity or use incorrect working procedures, you are risking damaging the crane or tipping it over. In such cases, the crane will not be guaranteed.
11. When the 4th & 5th boom sections are extended before extending the 2nd & 3rd boom sections completely, the rated lifting capacity for the special purpose shall be applied to prevent from damages on boom and extension system.

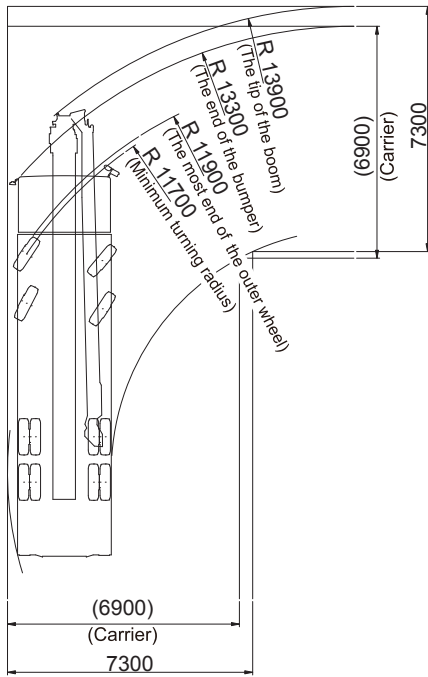
# WORKING RANGE



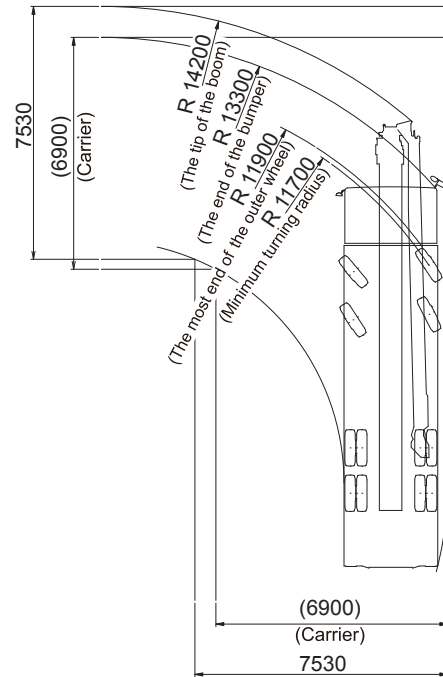
Notes:  
 1. Deflection of boom and jib is excluded.

## Minimum path width

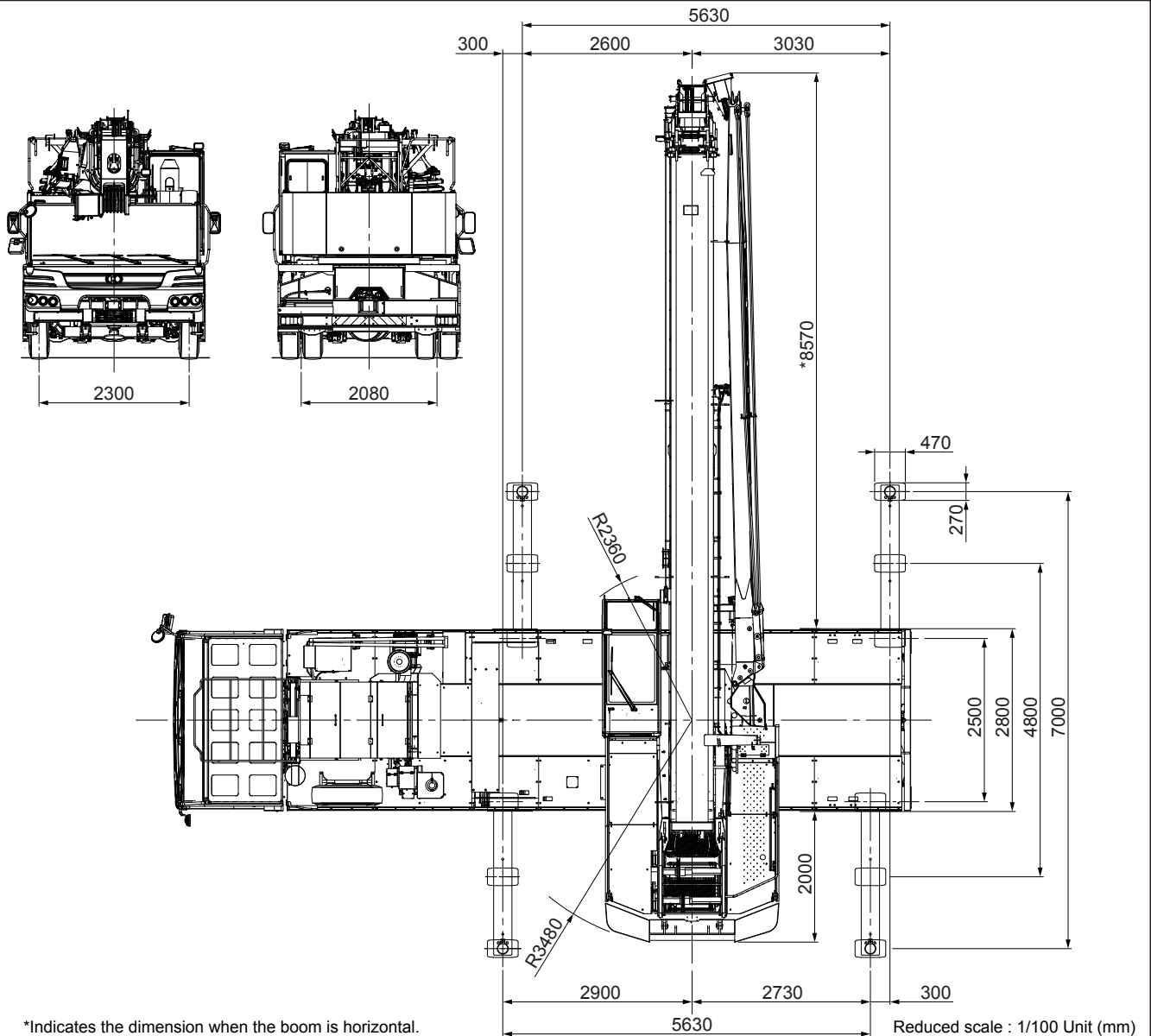
● Right turn



● Left turn



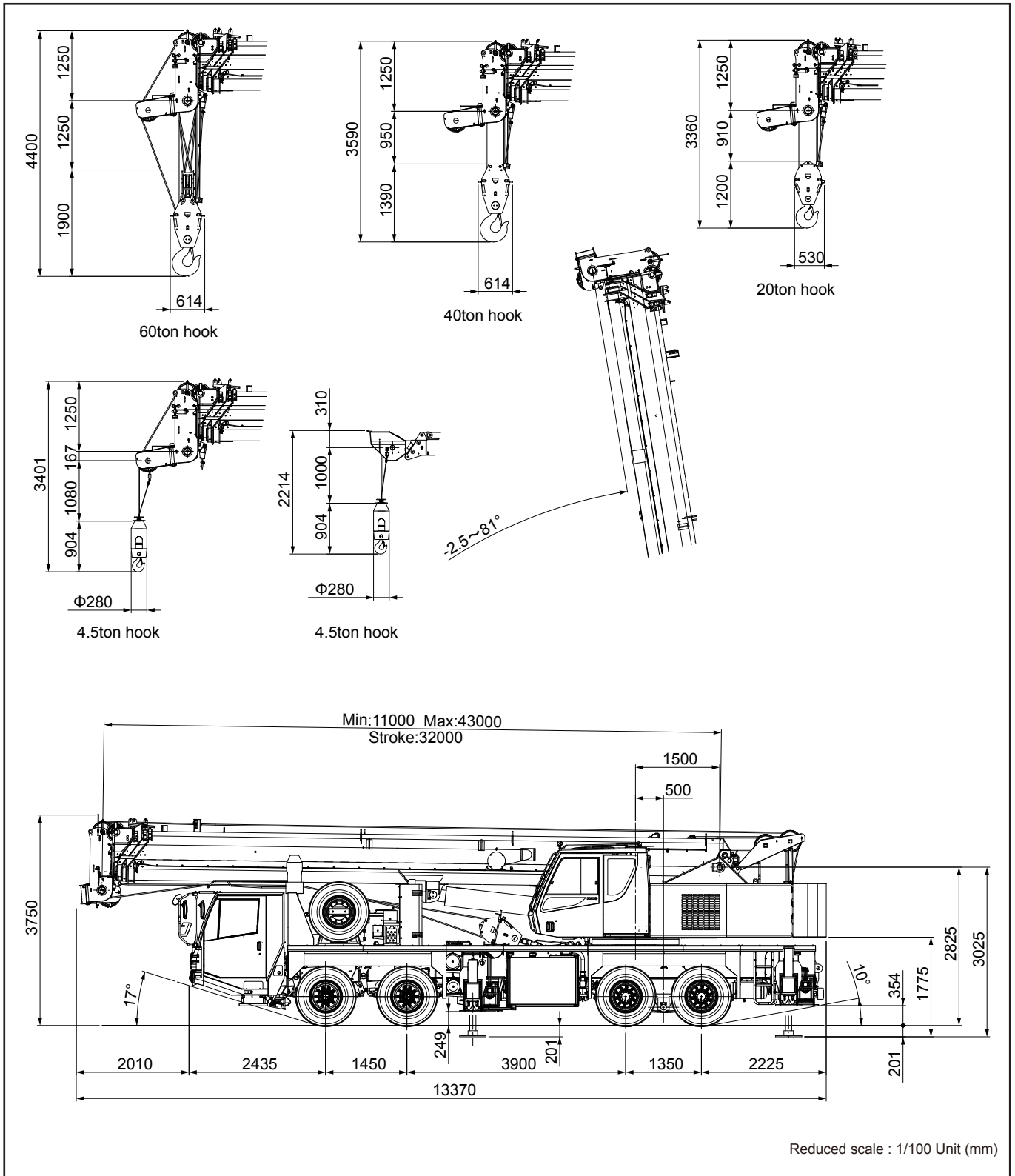
## Overall view



\*Indicates the dimension when the boom is horizontal.

Reduced scale : 1/100 Unit (mm)

# Overall view



\* KATO products and specifications are subject to improvements and changes without notice.

Address inquiries to:



## KATO WORKS CO.,LTD.

9-37, Higashi-ohi 1-chome, Shinagawa-ku, Tokyo, 140-0011, Japan  
 Tel. : Head Office Tokyo (03) 3458-1111  
 Overseas Marketing Department. Tokyo (03) 3458-1115  
 Fax. : Tokyo (03) 3458-1163

## KATO WORKS (THAILAND) CO.,LTD.

7/488 Moo 6, Tambol Mabyangporn, Amphur Pluakdaeng, Rayong Province 21140, Thailand  
 Tel. : 038-020-145  
 Fax. : 038-020-148



We acquired the "ISO 9001" certification which is an international standard for quality assurance.

C04361  
 9.2016-1000 (TI) 1